

The KISSsoft Interface to Pro/Engineer

Calculate, generate and document gears in 3D with KISSsoft and easily integrate them into Pro/Engineer !

KISSsoft

KISSsoft is a comprehensive CAE package for the layout, analysis and optimization of machine elements.

For our gear calculation software modules, we have developed an interface to Pro/Engineer. You can now calculate your gears in KISSsoft and, with the push of a button, create and display them in Pro/Engineer.

We could thus eliminate the laborious construction and the manual transfer of parameters from CAE to the CAD package. With KISSsoft and its interface, it is possible to keep it all under one umbrella.

Gear types

The Pro/Engineer interface supports the following gear types:

- Internal / External Spur Gears
- Internal / External Helical Gears
- Crossed Axes Helical Gears
- Bevel Spur Gears

More gear types will be implemented soon.

The KISSsoft interface supports Pro/Engineer versions Wildfire 2 and 3.

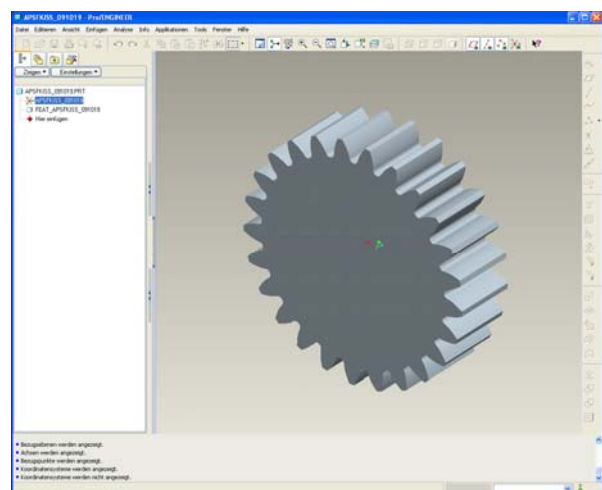
The Interface

Generation of a gear model can take place in one of two ways. A gear can be generated for an existing assembly or as a completely new part.

The interface attaches the KISSsoft calculation files, as well as the required manufacturing information for the two dimensional drawings, to the Pro/Engineer Part (see next page in section manufacturing data).

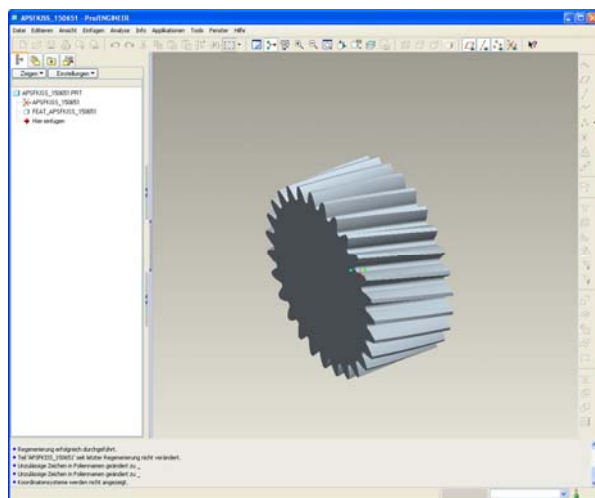
Gears are generated with circular approximation.

KISSsoft Pro/Engineer Interface is –intended for your international applications – available in following languages: English, German, French, Italian and Spanish.



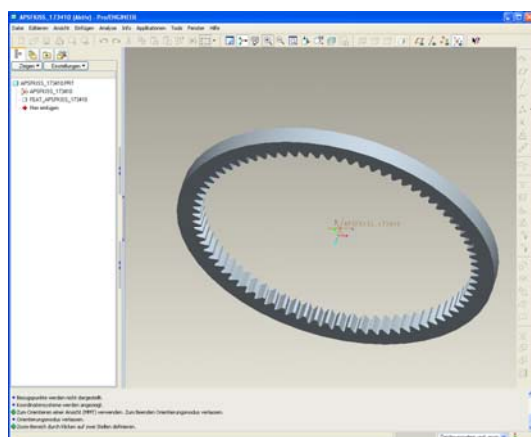
KISSsoft Display of Spur Gear in Pro/Engineer

Spur and Helical Gears



Helical Gear, Calculated with KISSsoft

KISSsoft calculates the geometry and the strength of spur gear pairs and helical gear pairs as well as planetary gear trains.



Internal Spur gear

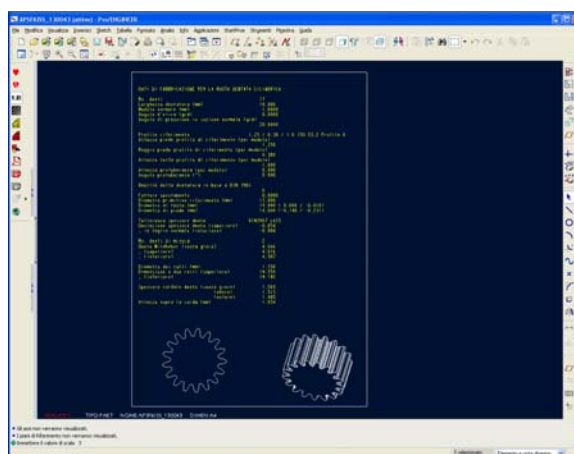
The exact generation of the tooth form is guaranteed by the manufacturing simulation. With this data, Pro/Engineer will generate the Spur or Helical Gears, both internal and external. The admissible tooth thickness tolerance deviation is implemented in the

KISSsoft Calculation and is also taken into consideration in the 3D Display. This display can also consider minimal, middle and maximal tolerance.

Calculation and Manufacturing Data

The calculation and manufacturing data are directly attached to the tooth profile. This means for you, as end-user, that the drawing will also contain all relevant manufacturing data.

By selection of the tooth in Pro/Engineer the interface takes you back to your KISSsoft calculation. This is a convenient method to implement changes. Through this, access to all necessary information from gear design to the manufacturing is ensured.



Manufacturing drawing with manufacturing data

For further information and a free test version, please contact your CAD Partner or visit us at the KISSsoft Web page. You can also call us at +41 55 254 20 53 and ask for Mr. Noske, who will be your direct partner.